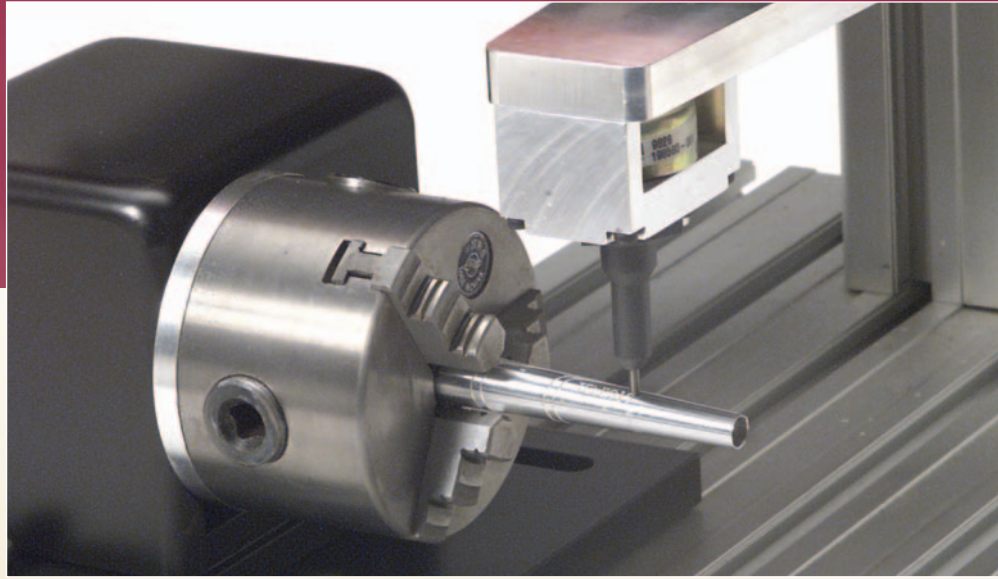


M A R K I N G S Y S T E M S

B E N C H M A R K



STEP-UP TO FLEXIBLE,  
PROGRAMMABLE AND PORTABLE  
PERMANENT MARKING.

**TELESIS**  
MARK OF CONFIDENCE

## MOVE AWAY FROM OLD FASHIONED MARKING WITH THE SOLUTION THAT MOVES WITH YOU.

BenchMark® dotpeen marking systems enable you to easily achieve quality, permanent part marking virtually anywhere you need it. Whether you have only an occasional need for marking, or if you need a marking capability in various locations, the BenchMark series is ideal.

### Unpack and Play

All BenchMark systems are designed for easy set-up and immediate use, right out of the box. Since these systems are built on electromechanical pin designs, you can use these benchtop or handheld markers wherever you need them, unrestrained by the need for air supply lines.

Furthermore, pin-marking eliminates the cost of consumables associated with outdated approaches such as chemical etching or ink-marking. Programmable BenchMark pin-marking systems also offer more flexibility than punches, handstamps, dies, or numbering wheels. This makes the cost-of-ownership equation for BenchMark systems very attractive, resulting in fast returns on your investment.

The fully-integrated but compact BenchMark controller does not require connection to a PC. This proven controller is a separate unit, allowing for easier maintenance and providing easy programming with broad functionality.

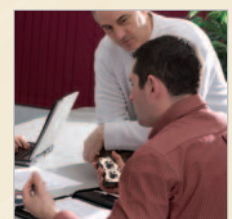
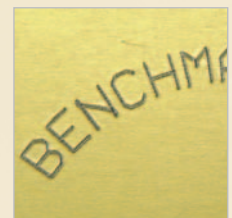
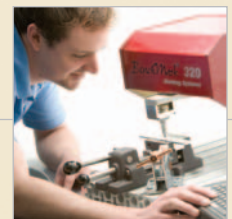
### Many applications

The large marking windows on our line of BenchMark systems allow you to easily handle a variety of marking tasks, involving many kinds of materials ranging from soft plastics to hard metals up to Rc60.

In addition, a comprehensive portfolio of pattern design tools, such as arc text and 2D Code, make your marking tasks as simple and convenient as possible. These systems automatically generate serial numbers as well as date, time and shift codes.

You also benefit from a one-year warranty on all BenchMark systems, as well as the availability of training, technical service and customer support from Telesis, the world leader in permanent marking.

For applications requiring expanded communications capabilities, BenchMark Plus systems are available, with RS232 serial communication.



## BenchMark Benchtop Systems

These benchtop systems feature rugged marking heads, extruded aluminum mounting posts and bases.

### Basic Benchtop System – BM200

The BM200 is equipped with a 100 x 100mm (4 x 4") marking window, suitable for many applications including data plate marking. The manually adjustable toolpost provides for flexibility in marking components of different sizes.

### Expanded Capability Benchtop System – BM320

The unique extended marking arm, which retracts to allow clear access for the loading and unloading of parts, and a larger 150 x 100mm (6 x 4") window bring additional flexibility and ease of use.



## BenchMark Handheld System

For parts too large or too heavy to be transported to a marking station, handheld markers provide the perfect solution.

### Handheld System – BM460

The lightest handheld marker in the industry (1.7kg, 3.75 lbs.), this highly efficient marking system is ergonomically designed for operator comfort and productivity. The generous marking window, 100 x 25mm (4 x 1"), is ideally sized for most marking applications.



## Expand BenchMark System Functionality

Further extend the functionality of your BenchMark marking system through a range of convenient options, including:

- Rotary fixtures for marking circumferences of cylindrical parts
- Start-Print foot switch or push button operation (benchtop station)
- Bar code scanner for automatic data entry
- Controller mounting bracket
- Battery pack for total portability (handheld system)
- Logo/font custom design software package
- Free PC-based upgrade utility
- Free PC-based pattern back-up utility

## Performance Chart

	BM200	BM320	BM460
<b>Marking Window</b>	100 x 100mm (4 x 4")	150 x 100mm (6 x 4")	100 x 25mm (4 x 1")
<b>Marking Head Weight</b>	5.6kg, 12.4 lbs.	8.63kg, 19.0 lbs.	1.75kg, 3.75 lbs.
<b>Max Marking Speed*</b>	3 char./sec.	3 char./sec.	2.3 char./sec.
<b>2D Code Capability</b>	Yes	Yes	Yes
<b>Pin Type</b>	Electric	Electric	Electric

\*3mm characters, 5 x 7 dot matrix



## CORPORATE HEADQUARTERS

### Telesis Technologies, Inc.

28181 River Drive, Circleville, Ohio 43113  
Tel +1-740-477-5000  
Fax +1-740-477-5001  
www.telesis.com

### Michigan Office

#### Telesis Technologies, Inc.

740 Welch Rd., Commerce Twp., MI 48390  
Tel +1-248-624-4249  
Fax +1-248-624-4431

## WORLDWIDE LOCATIONS

### Telesis Systèmes de Marquage

Parc International d'Entreprises Arlington,  
4 Bd Michael Faraday,  
F-77716 Marne La Vallée Cedex 4 – SERRIS  
Tél +33 (0)1 60.42.88.19  
Fax +33 (0)1 60.42.87.80

### TelesisEagle Ltd.

Dolphin Street, Colyton,  
Devon, UK, EX24 6LU  
Tel +44 (0) 1297 551313  
Fax +44 (0) 1297 551319  
uksales@telesistech.com

### Telesis Europe B.V.

Innsbruckweg 104,  
3047 AH Rotterdam, The Netherlands  
Tel +31 (0)10 462 2136  
Fax +31 (0)10 462 3863

### Telesis MarkierSysteme GmbH

Wülfingstrasse 6,  
D-42477 Radevormwald, Germany  
Tel +49 (0) 2191 60908-0  
Fax +49 (0) 2191 60908-88

### Telesis Taiwan

1F, No. 175, Dexiang Rd., Nanzi District  
Kaohsiung City 811, Taiwan  
Tel +886-7-3686678  
Fax +886-7-3680289

### Telesis China

Building #1, 1st Floor, 180 Zhangheng Road  
Zhangjiang Hi-Tech Park, Pudong New District  
Shanghai 201204, China  
Tel +86-021-33933851  
Fax +86-021-33933852

For more information on the flexible and programmable  
line of BenchMark® marking systems, or for your  
Laser Marking or PinStamp® pin-marking brochure  
please visit [www.telesis.com](http://www.telesis.com)



LASER



PINSTAMP®