

Spindle liner tubes

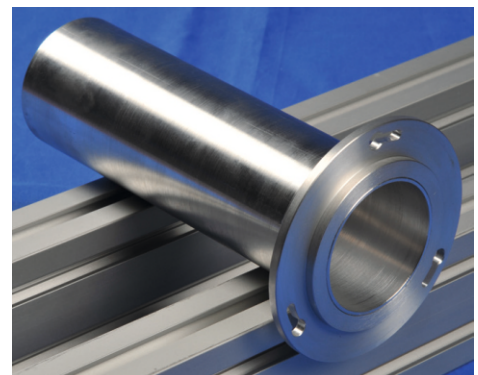
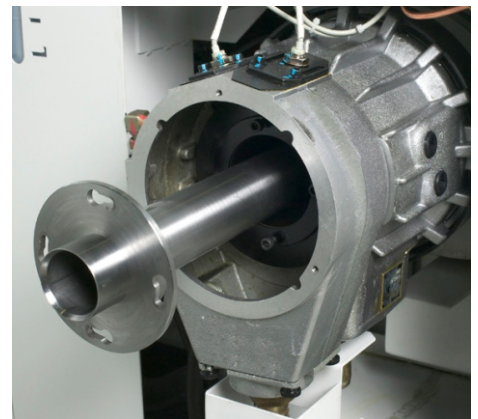
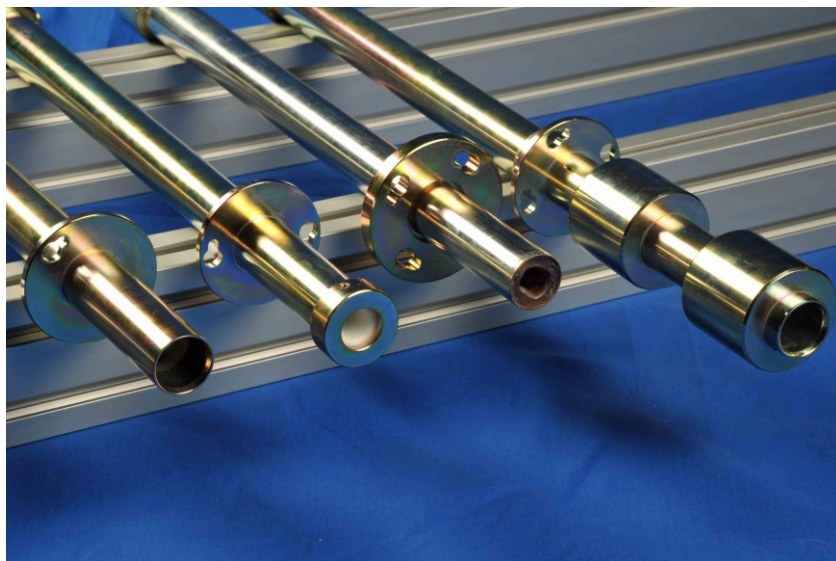
SER _____

Available for nearly all lathe types:

- 1 mm increment
- Adjusted for exact fit
- Delivered ready to install
- Aligned and balanced
- Optimize the guide of the bar stock in the machine spindle
- Minimize vibrations
- Increase the surface quality of the workpieces
- Extend the useful spindle length by up to 250 mm

Options:

- Profiled design
- Surface protection (passivating)
- Balance dynamically
- Special versions on request

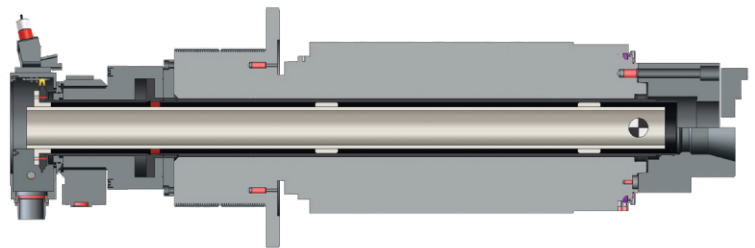


Extension of the coolant collecting tank

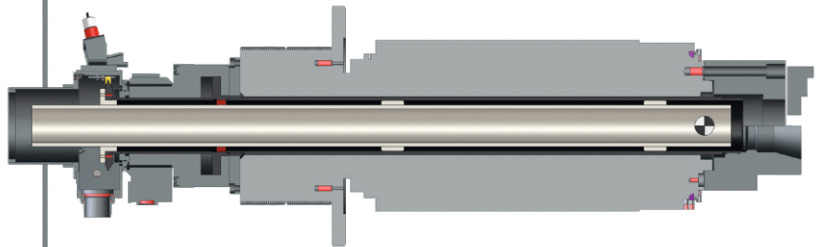
Spindle liner tubes

SER

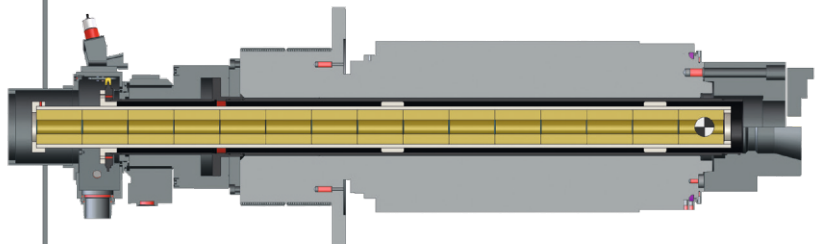
Spindle liner tube in
spindle length



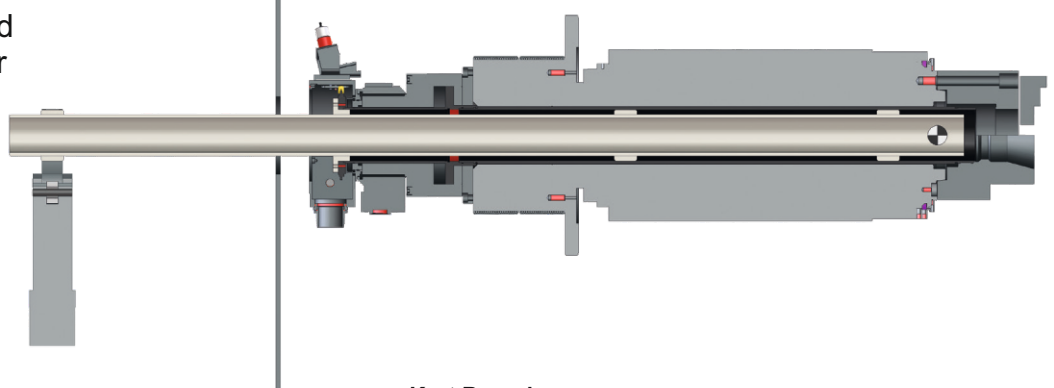
Extended spindle liner tube expands
the useful spindle length by up
to 250 mm.
Extension of the coolant collecting
tank as reach-in protection
and return feed of escaped coolant



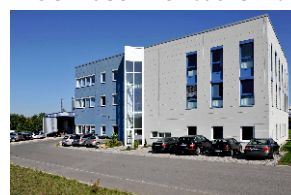
Spindle liner tube with guide
bushings for intermediate sizes
or bars with sensitive surfaces



Dynamically balanced
spindle liner tubes for
spindle extension



Kurt Breuning
IRCO Maschinenbau GmbH



Im Maurer 15
71144 Steinenbronn
DEUTSCHLAND
Fon: +49 7157 52860
Fax: +49 7157 528655
technologie@breuning-irco.de
breuning-irco.de