

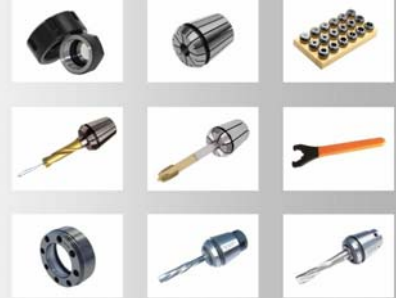


CATALOGO PRODOTTI

PRODUCTS CATALOGUE



PINZE E GHIERE ERC COLLETS AND NUTS ERC



PINZE ERC DIN 6499; PINZE ERC PORTAMASCHI CON QUADRO; PINZE ERC PER PER ALESARE E MASCHIATURA RIGIDA; PINZE PORTAMASCHI CON ESTRAZIONE; PINZE ERC CON TENUTA PER REFRIGERAZIONE INTERNA; CONTENITORI PER PINZE ERC; GHIERE ER PINZE ERC DIN 6499; CHIAVI PER GHIERE.



ERC COLLETS DIN 6499; TAPPING COLLETS WITH INTERNAL SQUARE; REAMER AND SYNCHRONIZED TAP COLLETS; TAP COLLETS WITH EXTENSION; SEALED COLLETS FOR COOLANT THROUGH TOOLS; ERC COLLETS RACKS; CAMPING NUTS FOR ERC COLLETS; WRENCHS FOR CAMPING NUTS.



**CHIA-MO SRL
VIA CADUTI DI SABBIBUNO, 12
40011 ANZOLA DELL'EMILIA
BOLOGNA ITALY**

**TEL +39 051734153
FAX +39 051734958**

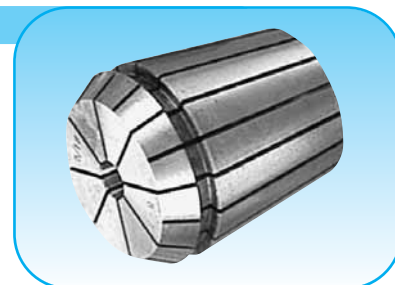
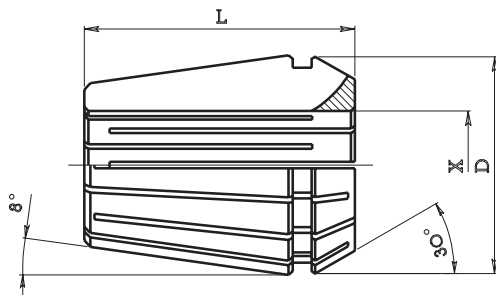
**WWW.CHIAMO.IT
INFO@CHIAMO.IT**



PINZE ERC AUTOESTRAIBILI Tipo 050

DIN 6499 B

ERC COLLETS



PINZE STANDARD (STANDARD COLLETS)

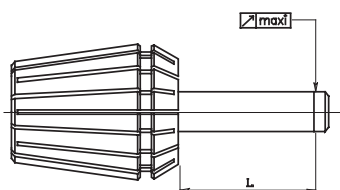
* Speciali (Special)

Code	Type			Bores min - max		Gripping Range	Collets for range
ART.	Tipo	D	L	X min	X max	Capacità serraggio	Pinze per serie
050.008	ERC 8	8.5	13.5	1.0	5.0	0.5	9
050.011	ERC 11	11.5	18	1.0	7.0	0.5	13
050.011*	ERC 11	11,5	18	7.5	8.0	0.5	2
050.012	ERC 12	12	20	1.0	7.0	0.5	13
050.016	ERC 16	17	27	1.0	3.0	0.5	5
050.016	ERC 16	17	27	4.0	10.0	1.0	7
050.016*	ERC 16	17	22	11.0	12.0	1.0	2
050.020	ERC 20	21	31	1.0	3.0	0.5	5
050.020	ERC 20	21	31	4.0	13.0	1.0	10
050.020*	ERC 20	21	24	14.0	15.0	1.0	2
050.025	ERC 25	26	35	1.0	3.0	0.5	5
050.025	ERC 25	26	35	4.0	16.0	1.0	13
050.025*	ERC 25	26	26	17.0	20.0	1.0	4
050.032	ERC 32	33	40	2.5	3.0	0.5	2
050.032	ERC 32	33	40	4.0	20.0	1.0	17
050.032*	ERC 32	33	33	21.0	25.0	1.0	5
050.040	ERC 40	41	46	3.0	30.0	1.0	28
050.050	ERC 50	52	60	6.0	34.0	1.0	29

PINZE ALTA PRECISIONE (HIGH PRECISION COLLETS)

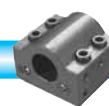
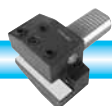
Code	Type			Bores min - max		Gripping Range	Collets for range
ART.	Tipo	D	L	X min	X max	Capacità serraggio	Pinze per serie
050.008P	ERC 8	8.5	13.5	1.0	5.0	0.5	9
050.011P	ERC 11	11.5	18	1.0	7.0	0.5	13
050.012P	ERC 12	12	20	1.0	7.0	0.5	13
050.016P	ERC 16	17	27	1.0	3.0	0.5	5
050.016P	ERC 16	17	27	4.0	10.0	1.0	7
050.020P	ERC 20	21	31	1.0	3.0	0.5	5
050.020P	ERC 20	21	31	4.0	13.0	1.0	10
050.025P	ERC 25	26	35	1.0	3.0	0.5	5
050.025P	ERC 25	26	35	4.0	16.0	1.0	13
050.032P	ERC 32	33	40	2.5	3.0	0.5	2
050.032P	ERC 32	33	40	4.0	20.0	1.0	17
050.040P	ERC 40	41	46	3.0	26.0	1.0	28

PROVA DI CONCENTRICITÀ
ROTATIONARY CONCENTRICITY TEST



Alesaggio D (Bores)		L	Limite max di concentricità (*) (max concentricity limit)	
Min	Max		Pinze standard (Standard collets)	Pinze alta precisione (High precision collets)
1	1,6	6	0,015	0,010
1,6	3	10	0,015	0,010
3	7	16	0,015	0,010
7	10	25	0,015	0,010
10	18	40	0,020	0,015
18	26	50	0,020	0,015
26	40	60	0,020	0,015

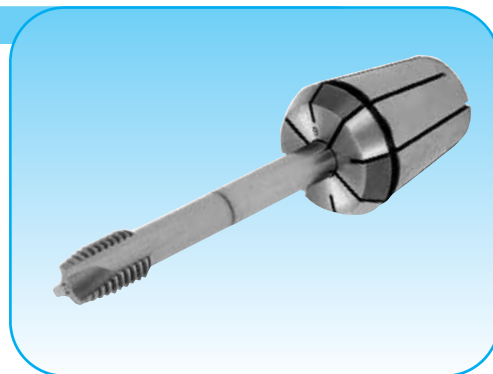
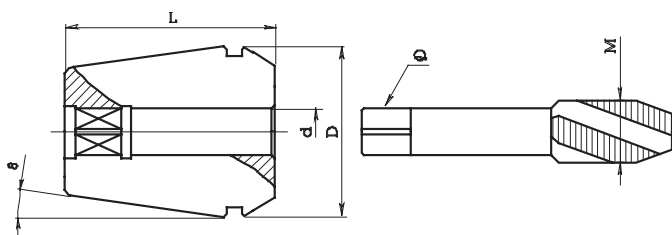
(*) Valori validi solo per il diametro nominale delle pinze.
(*) The tolerances are valid only for nominal diameter of the collets.





PINZE ERC PORTAMASCHI CON QUADRO

TAPPING COLLETS WITH INTERNAL SQUARE



Tipo (type) ERC 16 D=21 L=31			
ART. (Code)	d	quadro Q (square)	M
050.016M D0350	3.5	2.7	M3
050.016M D0400	4	3	M3.5
050.016M D0450	4.5	3.4	M4
050.016M D0500	5	4	M4
050.016M D0550	5.5	4.3	M5
050.016M D0600	6	4.9	M5-6-8
050.016M D0630	6.3	5	M6-8
050.016M D0700	7	5.5	M10
050.016M D0800	8	6.2	M8

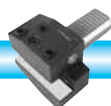
Tipo (type) ERC 20 D=21 L=31			
ART. (Code)	d	quadro Q (square)	M
050.020M D0350	3.5	2.7	M3
050.020M D0400	4	3	M3.5
050.020M D0450	4.5	3.4	M4
050.020M D0500	5	4	M4
050.020M D0550	5.5	4.3	M5
050.020M D0600	6	4.9	M5-6-8
050.020M D0630	6.3	5	M6-8
050.020M D0700	7	5.5	M10
050.020M D0800	8	6.2	M8
050.020M D0900	9	7	M12
050.020M D1000	10	8	M10

Tipo (type) ERC 25 D=21 L=31			
ART. (Code)	d	quadro Q (square)	M
050.025M D0350	3.5	2.7	M3
050.025M D0400	4	3	M3.5
050.025M D0450	4.5	3.4	M4
050.025M D0500	5	4	M4
050.025M D0550	5.5	4.3	M5
050.025M D0600	6	4.9	M5-6-8
050.025M D0630	6.3	5	M6-8
050.025M D0700	7	5.5	M10
050.025M D0800	8	6.2	M8
050.025M D0900	9	7	M12
050.025M D1000	10	8	M10
050.025M D1100	11	9	M14
050.025M D1120	11.2	9	M14
050.025M D1200	12	9	M16

Tipo (type) ERC 32 D=33 L=40			
ART. (Code)	d	quadro Q (square)	M
050.032M D0350	3.5	2.7	M3
050.032M D0400	4	3	M3.5
050.032M D0450	4.5	3.4	M4
050.032M D0500	5	4	M4
050.032M D0550	5.5	4.3	M5
050.032M D0600	6	4.9	M5-6-8
050.032M D0630	6.3	5	M6-8
050.032M D0700	7	5.5	M10
050.032M D0800	8	6.2	M8
050.032M D0900	9	7	M12
050.032M D1000	10	8	M10
050.032M D1100	11	9	M14
050.032M D1120	11.2	9	M14
050.032M D1200	12	9	M16
050.032M D1250	12.5	10	M16
050.032M D1400	14	11	M18
050.032M D1600	16	12	M20

Tipo (type) ERC 40 D=41 L=46			
ART. (Code)	d	quadro Q (square)	M
050.040M D0600	6	4.9	M5-6-8
050.040M D0700	7	5.5	M10
050.040M D0800	8	6.2	M8
050.040M D0900	9	7	M12
050.040M D1000	10	8	M10
050.040M D1100	11	9	M14
050.040M D1200	12	9	M16
050.040M D1400	14	11	M18
050.040M D1600	16	12	M20
050.040M D1800	18	14.5	M24
050.040M D2000	20	16	M27

Tipo (type) ERC 50 D=52 L=60			
ART. (Code)	d	quadro Q (square)	M
050.050M D0800	8	6.2	M8
050.050M D0900	9	7	M12
050.050M D1000	10	8	M10
050.050M D1100	11	9	M14
050.050M D1200	12	9	M16
050.050M D1400	14	11	M18
050.050M D1600	16	12	M20
050.050M D1800	18	14.5	M24
050.050M D2000	20	16	M27
050.050M D2200	22	18	M30
050.050M D2500	25	20	M33
050.050M D2800	28	22	M36
050.050M D3200	32	24	M39-42

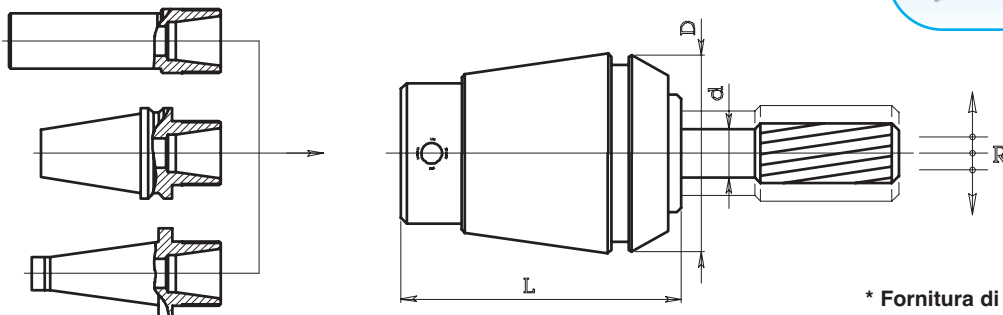




PINZE CBA PER ALESATURA E MASCHIATURA RIGIDA DIN 6499 B

REAMER AND SYNCHRONIZED TAP COLLETS

BREVETTATA
PATENTED

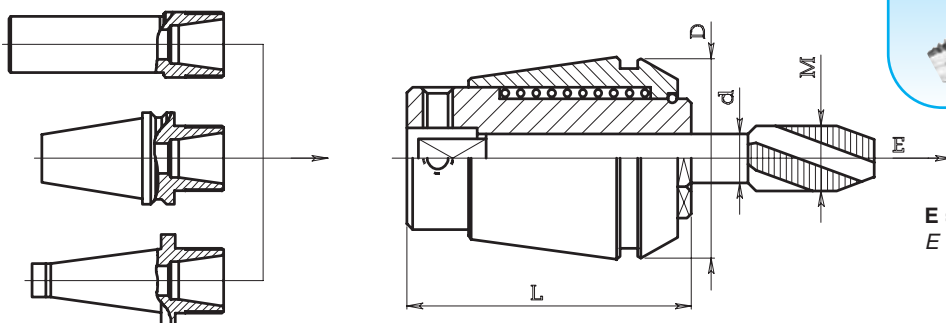
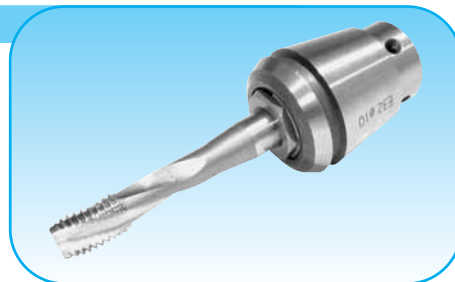


* Fornitura di altri alesaggi su richiesta
* Other bores providing on request

Code	Seat	bores *			
ART.	sede	D	L	alesaggi d *	R
IM-CBA-16	ERC 16	17	29	2 - 3 - 4 - 5 - 6 - 7	0.5
IM-CBA-20	ERC 20	21	32	3 - 4 - 5 - 6 - 7 - 8	0.5
IM-CBA-25	ERC 25	26	35	3 - 4 - 5 - 6 - 7 - 8 - 9 - 10	0.5
IM-CBA-32	ERC 32	33	44	4 - 5 - 6 - 7 - 8 - 9 - 10 - 11 - 12 - 13 - 14	0.5
IM-CBA-40	ERC 40	41	56	5 - 6 - 7 - 8 - 9 - 10 - 11 - 12 - 13 - 14 - 15 - 16	0.5

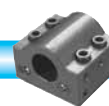
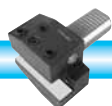
PINZE PORTAMASCHI CON ESTRAZIONE Tipo ZM 050 DIN 6499 B

TAP COLLETS WITH EXTENSION



E = corsa di estrazione
E = Extension stroke

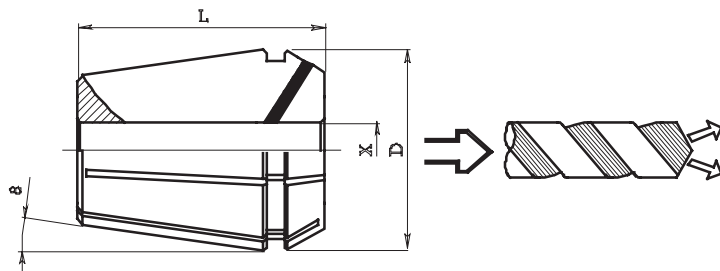
Code	Seat	Tap capacity			bores	
ART.	sede	D	L	capacità maschiatura M	alesaggi d	E
050.016 ZM	ERC 16	17	27	M1-M6	1.4 - 1.6 - 1.8 - 2 - 2.2 - 2.5 - 2.8 - 3 - 3.15 - 3.5 - 3.55 - 4 - 4.5 - 5 - 5.5 - 6	7
050.020 ZM	ERC 20	21	31	M1-M8	2.2 - 2.5 - 2.8 - 3 - 3.15 - 3.5 - 3.55 - 4 - 4.5 - 5 - 5.5 - 5.6 - 6 - 6.2 - 7 - 8	7
050.025 ZM	ERC 25	26	34	M3.5-M10 (M12)	2.5 - 2.8 - 3 - 3.15 - 3.5 - 3.55 - 4 - 4.5 - 5 - 5.5 - 5.6 - 6 - 6.2 - 6.3 - 7 - 8 - 8.5 - 9 - 10	8
050.032 ZM	ERC 32	33	43	M4-M12 (M16)	4.5 - 5 - 5.5 - 5.6 - 6 - 6.2 - 6.3 - 7 - 8 - 8.5 - 9 - 10 - 10.5 - 11 - 11.2 - 12 - 12.5	10
050.040 ZM	ERC 40	41	54	M6-M16 (M20)	6 - 6.2 - 6.3 - 7 - 8 - 8.5 - 9 - 10 - 10.5 - 11 - 11.2 - 12 - 12.5 - 14 - 15 - 16	13





PINZE ERC CON TENUTA PER REFRIGERAZIONE INTERNA DIN 6499

SEALED COLLETS FOR COOLANT THROUGH TOOLS



MAX: 70 bar - 1000 p.s.i.



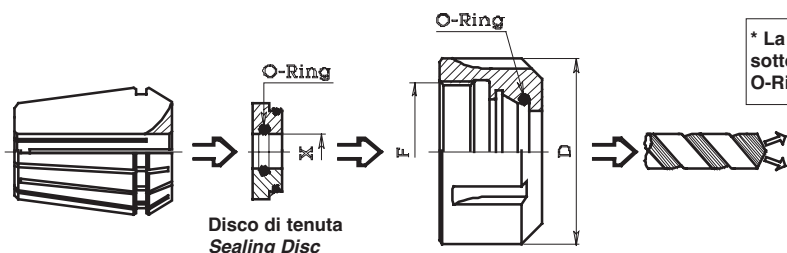
Gli inserti in neoprene, inseriti nei tagli della pinza, consentono l'uscita del refrigerante negli utensili con fori di lubrificazione.
The rubber seal in 30° taper, contain and direct the coolant only through the shank of cutting tools with holes.

Code	Type			Bores min - max*		Colles for range	
ART.	Tipo	D	L	X min*	X max*	progressione	Pinze per serie
050.011R	ERC 11	11.5	18	3	7	0.5	9
050.016R	ERC 16	17	27	3	10	0.5	15
050.020R	ERC 20	21	31	3	13	0.5	21
050.025R	ERC 25	26	35	3,5	16	0.5	27
050.032R	ERC 32	33	40	4	20	0.5	35
050.040R	ERC 40	41	46	4	26	0.5	45

* Le pinze ERC 050-R bloccano solo il diametro nominale.
The ERC 050-R collets hold the nominal size only.

GHIERE ERC CON TENUTA PER REFRIGERAZIONE INTERNA DIN 6499

SEALED NUTS FOR COOLANT THROUGH TOOLS



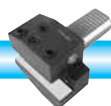
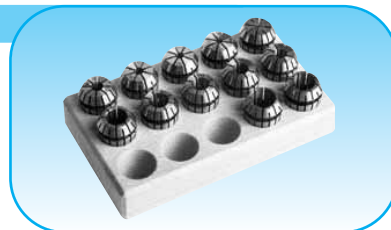
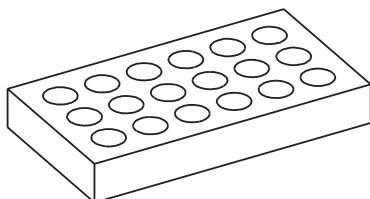
* La capacità di tenuta garantita dal "O-Ring" è pari a 0,5 mm al di sotto del diametro nominale "X".
O-Ring seal contain the coolant 0,5 mm under the "X" diameter.

Code nut	Type		Thread	Wrench	Code Sealing Disc	Bores min - max*		progression
ART. Ghiera	Tipo	D	F	Chiave	ART. Disco di tenuta	X min*	X max*	progressione
052.216R	ERC 16	28	22x1.5	053.216	052.216RD	4	10	0.5
052.220R	ERC 20	34	25x1.5	053.220	052.220RD	4	13	0.5
052.325R	ERC 25	42	32x1.5	053.325	052.325RD	3.5	16	0.5
052.332R	ERC 32	50	40x1.5	053.332	052.332RD	3.5	20	0.5
052.340R	ERC 40	63	50x1.5	053.340	052.340RD	4	26	0.5

CONTENITORI PER PINZE ERC

ERC COLLETS RACKS

Code	Collet	collets seats
ART.	Pinza	n. sedi
050.108 B	ERC 8	10
050.111 B	ERC 11	14
050.112 B	ERC 12	14
050.116 B	ERC 16	15
050.120 B	ERC 20	15
050.125 B	ERC 25	20
050.132 B	ERC 32	20
050.140 B	ERC 40	30





GHIERE DI SERRAGGIO PER PINZE Tipo 052

CLAMPING NUTS FOR ERC COLLETS

GHIERE MINI (MINI CLAMPING NUTS) Fig. 1

Code	Type			Thread
ART.	Tipo	D	H	F
052.108	ERC 8	12	11	10x0.75
052.111	ERC 11	16	11	13x0.75
052.116	ERC 16	22	17	19x1
052.120	ERC 20	28	19	24x1
052.125	ERC 25	35	20	30x1

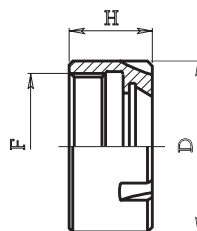


Fig. 1



GHIERE ESAGONALI (HEXAGONAL CLAMPING NUTS) Fig. 2

Code	Type			Thread
ART.	Tipo	D	H	F
052.208 B	ERC 8	13.5	11	10x0.75
052.211	ERC 11	19	11	14x0.75
052.216	ERC 16	28	17	22x1.5
052.220	ERC 20	34	19	25x1.5

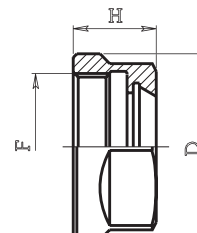
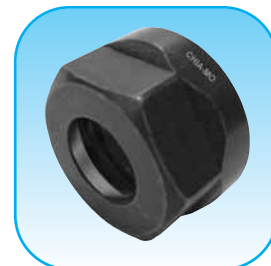


Fig. 2



GHIERE STANDARD (STANDARD CLAMPING NUTS) Fig. 3

Code	Type			Thread
ART.	Tipo	D	H	F
052.316	ERC 16	32	17.5	22x1.5
052.320	ERC 20	35	19	25x1.5
052.325	ERC 25	42	20	32x1.5
052.332	ERC 32	50	22	40x1.5
052.340	ERC 40	63	25	50x1.5
052.350	ERC 50	78	35	64x2

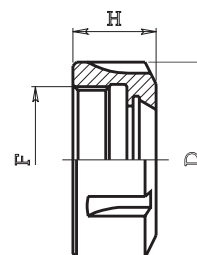


Fig. 3



GHIERE FILETTO ESTERNO (EXTERNAL THREAD NUTS) Fig. 4

Code	Type			Thread
ART.	Tipo	D	H	F
052.411	ERC 11	...	6	18x1
052.411 B*	ERC 11	...	9	18x1
052.416	ERC 16	...	8	24x1
052.416 B*	ERC 16	...	12	24x1
052.420	ERC 20	...	11	28x1.5
052.420 B*	ERC 20	...	13	28x1.5
052.425	ERC 25	...	12.5	32x1.5
052.425 B*	ERC 25	...	16.5	32x1.5
052.432	ERC 32	...	14	40x1.5
052.432 B*	ERC 32	...	19	40x1.5
052.440 B*	ERC 40	...	17	50x1.5

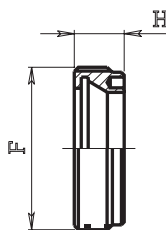
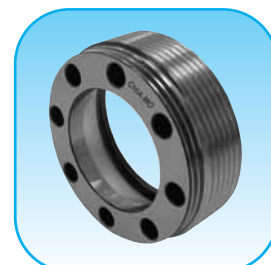


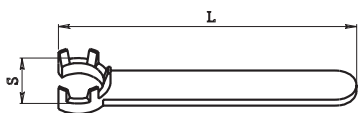
Fig. 4



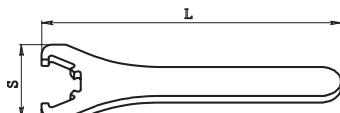
* Per chiave esagonale - * For hexagonal wrenches

CHIAVI PER GHIERE Tipo 053

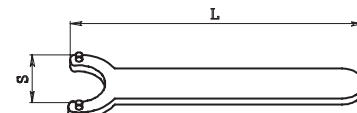
WRENCHES FOR CLAMPING NUTS



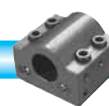
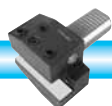
Code			For Nut Code
ART.	S	L	per ghiera art.
053.108	12	80	052.108
053.111	16	96	052.111
053.116	22	118	052.116
053.120	28	130	052.120
053.125	35	132	052.125

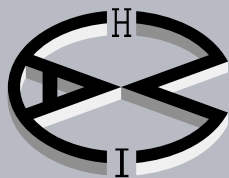
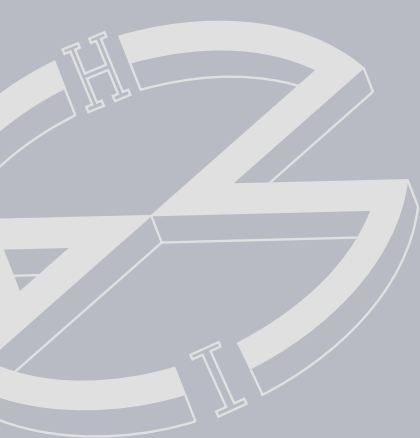


Code			For Nut Code
ART.	S	L	per ghiera art.
053.316	50	160	052.316
053.320	57	180	052.320
053.325	65	210	052.325
053.332	75	250	052.332
053.340	90	290	052.340
053.350	110	350	052.350



Code			For Nut Code
ART.	S	L	per ghiera art.
053.420	20.5	160	052.420
053.425	23.5	180	052.425
053.432	32	200	052.432





CHIA-MO

ITALY

DOVE SIAMO WHERE WE ARE



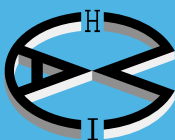
CHIA-MO

Via Caduti di Sabbiuno, 12

40011 Anzola dell'Emilia (Bologna) Italy

Tel. +39 051 734153 - Fax +39 051 734958

info@chiamo.it - www.chiamo.it



CHIA-MO

ITALY



Via Caduti di Sabbiuono, 12
40011 Anzola dell'Emilia (Bologna) Italy
Tel. +39 051 734153 - Fax +39 051 734958
info@chiamo.it - www.chiamo.it

