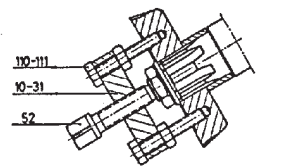
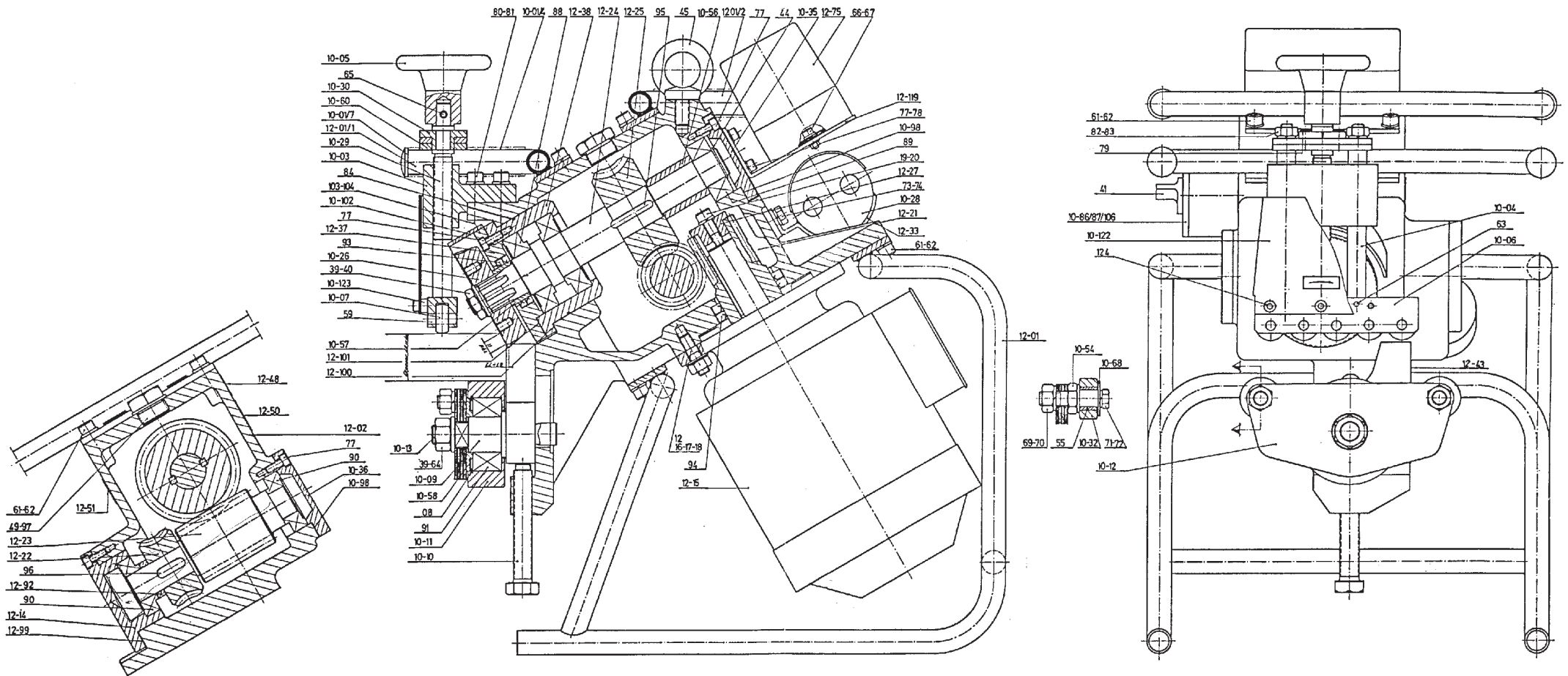
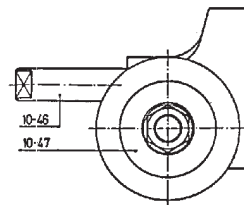


# CEVISA CHP-12 affaser



MILLING TOOL EXTRACTION DEVICE



DEVICE FOR BEVELLING OF TUBES

**HAJO TOOL**  
 Professionelt specialværktøj

Vejlegårdsvej 65 B • 2665 Vallensbæk Strand

Tlf.: 4444 2400 • Fax: 4444 0833

www.hajo.dk • hajo@hajo.dk

# CEVISA CHP-12 affaser

## Reservedele



**HAJO TOOL**

Professionelt specialværktøj

Vejlegårdsvej 65 B • 2665 Vallensbæk Strand

Tlf.: 4444 2400 • Fax. 4444 0833

www.hajo.dk • hajo@hajo.dk

Antal	Varenr.	Betegnelse
	N3C12-01	Support frame and handles
	N3C12-02	Housing
	N3C12-03	Nut
	N3C10-04	Guide cylinders (2 p.)
	N3C10-05	Adjustment wheel
	N3C10-06	Roller-holder mounting
	N3C10-07	Support rollers (5 p.)
	N3C10-09	Vertical slide
	N3C10-10	Adjustment spindle
	N3C10-11	Guide pulley 30°
	N3C101A	Guide pulley 35°
	N3C101B	Guide pulley 37,5°
	N3C101C	Guide pulley 45°
	N3C10-12	Support pulley mounting
	N3C10-13	Lockscrew
	N3C12-14	Side cover
	N3C12-15	3 HP motor
	N3C12-21	Input worm shaft
	N3C12-22	Worm crown
	N3C12-23	Worm shaft
	N3C12-24	Main shaft
	N3C12-25	Worm crown

Antal	Varenr.	Betegnelse
	N3C10-26	Milling tool
	N3C10-27	Bushing
	N3C10-28	Switchbox
	N3C10-29	Adjustment spindle
	N3C10-30	Securing bush
	N3C10-31	Milling tool extractor
	N3C10-32	Support pulley (2 p.) 30°
	N3C103A	Second support pulley 35°
	N3C103B	Second support pulley 37,5°
	N3C103C	Second support pulley 45°
	N3C12-33	Switchbox mounting
	N3C10-35	Back cover
	N3C10-36	Side cover
	N3C12-37	Front cover
	N3C12-38	Bearing holder bush
	N3C10-41	Reverser switch
	N3C10-43	Bevel adjustment plate
	N3C10-46	Tube bevelling shaft
	N3C10-47	Tube bevelling washer
	N3C12-49	Oil filler cap
	N3C10-54	Support pulley shaft (2 p.)
	N3C10-55	Selfoil bush

Antal	Varenr.	Betegnelse
	N3C10-56	Space bush
	N3C 10-57	Milling tool spacer bush
	N3C10-58	Space washer
	N3C10-60	Mobile support
	N3C10-68	Washer (2 p.)
	N3C12-75	Electrics box
	N3C12-76	Electrics box support
	N3C10-86	Switch securing washer
	N3C10-88	Bearing Nr. 30.207 (2 p.)
	N3C10-89	Bearing Nr. 4.205
	N3C10-90	Bearing Nr. 30.205 (3 p.)
	N3C10-91	Bearing Nr. 3206
	N3C12-92	Bush
	N3C10-93	Oil seal 35 x 47 x 6 (2 p.)
	N3C12-94	Oil seal 50 x 68 x 8 (2 p.)
	N3C12-98	Seal (2 p.)
	N3C12-99	Seal
	N3C12-100	Seal
	N3C12-101	Seal
	N3C12-102	Milling tool protector
	N3C12-122	Guard